

Company Philosophy



- Peace - We value the compassion for seeing things from other persons' points of view.
- Amiability - We will always be thankful.
- Harmony - We will be members of society with common sense and good balance.
- In Totality - We pursue positive thinking and forward-looking activities.
- Japan - As a Japanese company in the international community, we will cultivate our culture and pride.

JUST FIT JUST YOUR'S

"What do you need?" EGURO's management policy is "JUST FIT JUST YOURS." We are the tool the customers use to produce exactly what they need. EGURO produces over 30 types of machine tools every year. Among our productions, you can find specialized equipment for niche markets, dedicated tools for specific users, and also models that were given the clients' company names.

On the foundation of tradition and trust, we will continue our innovation alongside customers. EGURO's products are not lock-step, ready-made products, but cater to the satisfaction valued, needed, and desired by customers.

PALLET SYSTEM

In order to accomplish such optimal machining, we need to configure the tools and machining conditions to suit the parts. Normally when using a combined machine, machining options are restricted to the specifications of the machine tool. However, EGURO, fastidious about gang-type tools, materializes the customers' one and only optimal machine by selectively equipping the compound tool rest with the latest units. Just like a beautiful work of art is born by placing pigments selected from a palette on the canvas...

Product warranty

The machines of Eguo are all for accurate machining. They are made to fulfill the needs of the customers, together with high accuracy cultivated by gang turret lathes.

The fundamentals such as clamping or turning works and automation are well considered. The machines will be completed in cooperation with the customers, by which they are all Product warranted.



Opening the future with
heart-throbbing technologies

Welcome to EGURO World

Specification and design of the machine may be changed without prior notice depending on options, tooling set-up, improvement of the machine, etc.

Producing area for Smart Devices Okaya City



Climbing up the mountain behind Eguro Ltd., we can see Mt.Fuji, the highest mountain in Japan. We aim for the top manufacturer in the small but special purpose machine tool market.

Dear Customers,

Tradition, reliance, innovation.

EGURO LTD. makes much of them.

Proceeding with the customer. This is the posture of EGURO LTD.

Ever since the establishment, we have been developing small precision machine tools of high accuracy and high quality together with the reliance from the customers, most advanced technologies and our own ideas as well.

The machine tools developed are various, from those of conventional to of complex machining. This is because we have been providing the individual customer with the best fitted machine under the catch phrase JUST FIT JUST YOURS.

We always propose and act in the customers place. It is our mission.

All of our staffs commonly have the word of Technology of High Quality, which means total technology to present the best suited machine to the customers.

We will proceed with the customers, replying the customers reliance and expect by the

Technology of High Quality. We will contribute to the progress of the society with our products.

Hirofumi Eguro
President



Head office photo

■Corporate Philosophy

■Our mission: Technologies and Trust

We will respond to the trust and expectations with high-grade techniques and contribute to societal growth through our products.

■Our basic policy: Being a creative company

1. With an eye to the changes that come with time, we will precisely cater to the demands of our customers and our society.
2. We will develop original techniques, taking on the challenge of developing products that are one step ahead.
3. We will cultivate an appealing corporate climate based on the belief that employees are the primary management resource.

■Our conduct: Facing challenges with pride

1. We take pride in our work and will nurture dreams and happiness.
2. We will fulfill our responsibilities with enthusiasm and good faith.
3. We will ceaselessly work to improve our knowledge and skills in order to open up possibilities.
4. We will challenge higher goals with our originality and ingenuity.
5. We will create a workplace where open, lively exchange of minds is fostered.

■Company Profile

Name
EGURO.LTD
Establish
October,1937
Capital
85,800,000 yen
NO. of employee
180
President
HIROFUMI EGURO
Enterprise Content
Sales and manufacture precision machine tools(precision lathes,CNC precision lathes and machineing centers)
Office
Okaya,Tokyo,Nagoya,Osaka,
Thai representative office
Head office
8-14,Oguramachi,Okaya City,Nagano Japan 394-0043
TEL 0266-23-5511
FAX 0266-24-0167
URL <http://www.eguro.co.jp/>
Thai office
Eguro Limited
496-502 Amarin Plaza 10th Floor, Room 18,
Ploenchit Road, Lumpini,Pathumwan,Bangkok 10330
TEL (FAX) 66(0)2-305-6822
E-mail : m-komatsu@eguro.co.jp

Creator of epoch machines

- Nov. 2014 E-32vDX,Multi-face precision machining center and SBS-100F,Short bar both ends simultaneous turning lathe debut at JIMTOF.
- Nov. 2012 SANFLEX-8, high accuracy gang tooling complex machinig lathe and RGS-200, NC roulette lathe debut at JIMTOF.
- Aug. 2011 Thai representative office opend in Bangkok.
- Nov. 2010 NUCMAX-10, operations combined complex machining CNC lathe, E-32vLC, multi faces small machining center and B-ART-100 two spindle back oriented CNC lathe debut at JIMTOF
- Jun. 2007 Selected as One of the 300 Active Small and Medium Size Enterprizes of Production in Japan by the Small Midium Size Enterprises Agency (an agency of METI)
- Nov. 2006 Awarded Long Life Best Seller Prize by the 8th Praise Traditionally Valuable Machine Publicly on GL-120 precision small lathe at JIMTOF
- Nov. 2004 SANAX-6, three axes control NC lathe debut.
- Nov. 2002 REVOLVER-32, NC lathe with ATC debut at JIMTOF.
- Nov. 2001 Awarded Good Design Prize by Japan Industrial Design Promotion Organization on NUC series.
- Nov. 1998 Five axes machining center E-43v debut at JIMTOF in Osaka.
- Oct. 1992 CI introduced. Company name changed to EGURO Ltd.
- Oct. 1992 CNC bench lathe EBN-α debut at JIMTOF in Tokyo.
- Oct. 1988 NUCROB-10, robot combined small precision CNC lathe debut.
- Oct. 1988 Five axes machining center E-32v debut.
- Oct. 1986 Ultra compact NC lathe NUCBOY-8 debut.
- Jul. 1984 Air conditioned work room for precision machining constructed.
- Jul. 1984 Awarded the Contribution for Safety Prize by Prime Minster
- May. 1982 Precision NC lathe NUCLET-10 debut.
- Sep. 1981 Minowa plant, for machining only, constructed.
- Oct. 1977 NC small precision lathe NUCPAL-10, electricity combined first machine in Japan debut.
- Aug. 1970 ENC-101, first gang tooling CNC lathe in Japan debut,
- Oct. 1968 Program control automatic lathe debut and its production started in 1970.
- 1967 Share of Eguro bench lathes over 47%
- Jul. 1956 Moved to the present place Okaya.
Reorganized as Eguro Machinery Co.,Ltd.
- Dec. 1944 Evacuated to Shimosuwa, next door town to Okaya
- Oct. 1937 Eguro Machinery established in Itabashi, Tokyo, as a limited liability company.
Production of machine tools started.



Line up of Eguro's products in a wide variety

JUST FIT JUST YOUR'S

2 axes gang turret CNC lathe

EBN-10EX	Precision Small CNC lathe
NUCBOY-8EX	Precision Small CNC lathe
NUCLET-10EX	Precision Small CNC lathe
NUCLET-10EL	Precision Small CNC lathe
NUCPAL-10EX	Precision Small CNC lathe
NUCLET-10vv	Precision Small CNC lathe
NUCMAX-10	Precision Small CNC lathe

3 axes vertical gang turret CNC lathe

SANAX-6	Vertical gang turret CNC lathe
SANAX-10	Vertical gang turret CNC lathe
SANATURN-6	Counter 2 spindle 3 axes CNC lathe
SANATURN-10	Counter 2 spindle 3 axes CNC lathe
SANATURN-6B	Ultra compact auto lathe with non-traveling spindle head
SANFLEX-8	Highly accurate linear turret complex machining lathe

Machining Center

E-32vDX	Multi-face Precision Machining Center
E-32vEX	Multi-face Precision Machining Center
E-32vLC	Multi-facial 5 axis small machining center
E-43v	Multi-face Precision Machining Center

Special purpose machine per market

RGS-200	NC roulette lathe
ECOLA	Ceramic raw material turning CNC lathe
100-nano	Ultra precision gang turret CNC lathe
SANACAM	3 axes control cam milling machine
EMS-4C	Outer cam milling machine
EMS-8IC	Inner cam milling machine
B-ART-100	Back oriented 2 spindle NC lathe
CUBE	Y axis slide control CNC lathe
PEGASUS	Short cycle time machine
EAL-2000	HDD aluminum disk turning lathe
EAGLE-10	Two sides consistent turning lathe
OM-430	Multi spindle center
RL-450	OPC drum finishing lathe
RL-550EX	OPC drum finishing lathe
RF-400	OPC drum finishing lathe
SR-600	Large size drum turning lathe
HR-550LC	Magnet roller outer diameter turning lathe
SD-550	OPC drum finishing lathe
BSS-Series	Both ends simultaneous turning lathe
BSM-Series	Both ends simultaneous turning lathe
BSZ-Series	Both ends simultaneous turning lathe
BSF-A3	3 axes control both ends simultaneous turning lathe
BSK-300	Both ends simultaneous tuning lathe well prepared for coolant oil
UB-300LC	Both ends centering machine
UB-700	Both ends centering machine
SBS-100F	Short bar both ends simultaneous turning lathe
RS-100	Magnet sleeves outer diameter turning lathe

CNC lathe for automation

NUCROBO-8EX	Multi-joint robot loader
NUCROBO-101	Multi-joint robot loader
NUCBOY-8LL	Loader less loader
NUCLET-10LL	Loader less loader
NUCJET-8	2 axis gantry loader
NUCJET-102	2 axis gantry loader
NUCJET-103	3 axis gantry loader
NUCLET-10A	High speed mechanic loader

Small precision lathe

GL-120	Small precision high speed lathe
EB-8/10	Bench Lathes
LB-6	Bench Lathes

『PALLET SYSTEM』 unit groups

- Chip Cutting Device
- Spherical surface turning lathe
- Sub-spindle
- Drill unit
- Short-bar barfeeder
- 8-Direction turret
- Grinding unit
- ABC Tooling
- Tapping unit
- **ROBO-Station**



Blue Ocean

Partner special purpose machine

- Ultra precision cam milling machine
- Scroll milling machine
- Contact lens turning lathe
- Ultra size drum turning lathe
- Ceramic grinding machine
- Magnet sleeve complex machining lathe

2 axes gang turret CNC lathe NUC-Series

- NUC series are best seller machines, challenging directly the old but new task to achieve "Higher accuracy", "Easier to use", "Higher speed" or "Longer life".



Highly accurate gang turret CNC Lathe for the next generation

• NUCLET-10VV

- Challenge for highly accurate machining and energy saving
- Software for spindle motor energy saving (Patent tending)
- Adoption of 60°V-V guides for Z slide
- Cooling system for the bed and the slides are prepared as option.



Precision Small CNC lathe
• **NUCBOY-8EX**



Precision Small CNC lathe
• **NUCLET-10EX**



Precision Small CNC lathe
• **NUCPAL-10EX**



Precision Small CNC lathe
• **EBN-10EX**



Precision Small CNC lathe
• **NUCLET-10EL**



Precision Small CNC lathe
• **NUCMAX-10**

Main specifications

	■ EBN-10EX	■ NUCBOY-8EX	■ NUCLET-10EX/EL	■ NUCPAL-10EX	■ NUCLET-10VV	■ NUCMAX-10
Swing over bed	360 (mm)	270 (mm)	350 (mm)	350 (mm)	350 (mm)	350 (mm)
Main spindle speed	Max 4,000 (min ⁻¹)	Max 4,000 (min ⁻¹)	Max 5,000 (min ⁻¹)	Max 5,000 (min ⁻¹)	Max 5,000 (min ⁻¹)	Max 5,000 (min ⁻¹)
Spindle nose	EDA-10 Collet type	EDA-8 Collet type	EDA-10 Collet type	EDA-10 Collet type	φ100 Flat type	φ100 Flat type
Slide travel	X-axis : 200 Z-axis : 150 (mm)	X-axis : 230 Z-axis : 200(mm)	X-axis : 260 Z-axis : 250(mm)	X-axis : 420 Z-axis : 390(mm)	X-axis : 260 Z-axis : 250(mm)	X-axis : 450 Z-axis : 400(mm)
Slide rapid traverse	X-axis : 12 Z-axis : 12(m/min)	X-axis : 15 Z-axis : 15(m/min)	X-axis : 15 Z-axis : 15(m/min)	X-axis : 15 Z-axis : 15(m/min)	X-axis : 15 Z-axis : 15(m/min)	X-axis : 15 Z-axis : 15(m/min)
Number of tools	According to the works	According to the works	According to the works	According to the works	According to the works	According to the works
Floor space(L×W)	1,114×770 (mm)	1,000×1,100 (mm)	1,580×1,360 (mm)	1,800×1,645 (mm)	1,917×1,270 (mm)	2,200×1,645 (mm)
Machine weight	625 (kg)	680 (kg)	1,200 (kg)	2,100 (kg)	1,200 (kg)	2,100 (kg)

3 axes vertical gang turret CNC lathe SAN-Series

3 axes simultaneous control vertical gang turret CNC lathe, as the machine for minute, complex machining, develops a new field of machining, keeping the feature of the gang turret lathe to realize the highly accurate machining.

■ SANAX-series



Vertical gang turret CNC lathe
● **SANAX-6**



Vertical gang turret CNC lathe
● **SANAX-10**

■ SANATURN-series



Counter 2 spindle 3 axes CNC lathe
● **SANATURN-6**



Counter 2 spindle 3 axes CNC lathe
● **SANATURN-10**



Highly accurate linear turret complex machining lathe
● **SANFLEX-8**

● Highly accurate linear turret complex machining lathe

3 (2 + 1) axes simultaneous control gang turret complex turning machine. The spindle of the 2 axes simultaneous control gang turret lathe is controlled by Y axis. Complete symmetrically designed machine. On the symmetric structure, the spindle of built-in motor is mounted and on the platform can come multi-tool rest, multistage honey comb tool holder, rotary spindle, grinding units, etc. The best suited machine can be built by selection or combination of these tools.



Ultra compact auto lathe with non-traveling spindle head
● **SANATURN-6B**

● All in one type ultra compact auto lathe with non-traveling spindle head

Machine specifications

- Machine
- 3 axes simultaneously controlled vertical gang turrets
- Counter two spindles
- Independently movable cut off slide
- "SMS-400" barfeeder united with machine
- Workpiece outgo conveyor
- Coolant device/ coolant tank

*1 Supply stocker: Option
*2 Work collection device: Option

Main specifications

	■ SANAX-6	■ SANAX-10	■ SANATURN-6	■ SANATURN-6B	■ SANATURN-10	■ SANFLEX-8
Capacity	Max $\phi 30 \times 100$ (mm)	Max $\phi 80 \times 60$ (mm)	Max $\phi 30 \times 120$ (mm)	Max $\sim \phi 15$ (mm)	Max $\phi 60 \times 250$ (mm)	Max $\phi 60 \times 80$ (mm)
Main spindle speed	Max 12,000 (min ⁻¹)	Max 5,000 (min ⁻¹)	First spindle: Max 12,000 / Second spindle: Max 5,000 (min ⁻¹)	First spindle: Max 12,000 / Second spindle: Max 5,000 (min ⁻¹)	First / Second spindle: Max 5,000 (min ⁻¹)	Max 6,000 (min ⁻¹)
Spindle nose	EDA-6 Collet type	EDA-10 Collet type	First spindle: EDA-6 / Second spindle: EDA-3 (Collet type)	First spindle: EDA-6 / Second spindle: EDA-3 (Collet type)	First / Second spindle: EDA-10 (Collet type)	$\phi 75$ Flat type
Slide travel	X-axis: 40 Y-axis: 100 Z-axis: 150 (mm)	X-axis: 80 Y-axis: 170 Z-axis: 300 (mm)	X-axis: 50 Y-axis: 100 Z-axis: 150 A-axis: 150 (mm)	X-axis: 50 Y-axis: 100 Z-axis: 150 A-axis: 150 (mm)	X-axis: 100 Y-axis: 150 Z-axis: 300 A-axis: 300 (mm)	X-axis: 300 Y-axis: 200 Z-axis: 250 (mm)
Slide rapid traverse	X-axis: 8 Y-axis: 8 Z-axis: 15 (m/min)	X-axis: 10 Y-axis: 12 Z-axis: 15 (m/min)	X-axis: 8 Y-axis: 8 Z-axis: 15 A-axis: 5 (m/min)	X-axis: 8 Y-axis: 8 Z-axis: 15 A-axis: 5 (m/min)	X-axis: 10 Y-axis: 12 Z-axis: 15 A-axis: 10 (m/min)	X-axis: 25 Y-axis: 8 Z-axis: 20 (m/min)
Number of tools	Max. 10 tools	Max. 10 tools	Max. 7 tools	Max. 7 tools	Max. 7 tools	According to the works
Floor space (L×W)	800×880 (mm)	1,625×1,095 (mm)	980×800 (mm)	1,730×1,005 (mm)	1,835×1,384 (mm)	2,070×1,645 (mm)
Machine weight	550 (kg)	2,000 (kg)	980 (kg)	1,130 (kg)	2,500 (kg)	3,000 (kg)

CNC lathe for automation (FMC)

Based on the NUC series, 4 series of automation cells are prepared per application.

- Vertical multi-joint robot
- Loader-less loader
- Gantry loader
- High speed mechanical



Loader less loader

● **NUCBOY-8LL**



Loader less loader

● **NUCLET-10LL**



Multi-joint robot loader

● **NUCROBO-8EX**



Multi-joint robot loader

● **NUCROBO-101**



2 axis gantry loader

● **NUCJET-8**



2 axis gantry loader

● **NUCJET-102**



3 axis gantry loader

● **NUCJET-103**



High speed mechanic loader

● **NUCLET-10A**

Main specifications

	■ NUCBOY-8LL	■ NUCLET-10LL	■ NUCROBO-8	■ NUCROBO-10EX	■ NUCJET-8	■ NUCJET-102/103	■ NUCLET-10A
Swing over bed	270 (mm)	350 (mm)	270 (mm)	350 (mm)	270 (mm)	350(mm)	350(mm)
Main spindle speed	Max 4,000 (min ⁻¹)	Max 5,000 (min ⁻¹)	Max 4,000 (min ⁻¹)	Max 5,000 (min ⁻¹)	Max 4,000 (min ⁻¹)	Max 5,000 (min ⁻¹)	Max 5,000(min ⁻¹)
Spindle nose	EDA-8 Collet type	EDA-10 Collet type	EDA-8 Collet type	EDA-10 Collet type	EDA-8 Collet type	EDA-10 Collet type	EDA-10 Collet type
Slide travel	X-axis:230 Y-axis:200(mm)	X-axis:260 Y-axis:250(mm)	X-axis:230 Y-axis:200(mm)	X-axis:260 Y-axis:250(mm)	X-axis:230 Y-axis:200(mm)	X-axis:260 Y-axis:250(mm)	X-axis:260 Y-axis:250(mm)
Slide rapid traverse	X-axis:15 Z-axis:15(m/min)	X-axis:15 Z-axis:15(m/min)	X-axis:15 Z-axis:15(m/min)	X-axis:15 Z-axis:15(m/min)	X-axis:15 Z-axis:15(m/min)	X-axis:15 Z-axis:15(m/min)	X-axis:15 Z-axis:15(m/min)
Number of tools	According to the works ※Include the loader/unloader	According to the works ※Include the loader/unloader	According to the works	According to the works	According to the works	According to the works	According to the works
Ways for automation	Load and unload unit on the slide	Load and unload unit on the slide	Load and unload by FANUC LR-MATE[200iD]	Load and unload by FANUC LR-MATE[200iD]	Load and unload by 2 axis gantry loader	NUCJET-102:Load and unload by 2 axis gantry loader NUCJET-103:Load and unload by 3 axis gantry loader	Load and unload by high speed mechanical loader

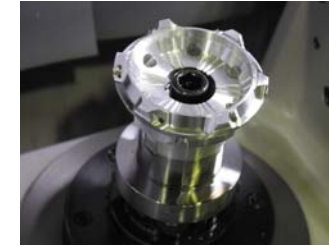
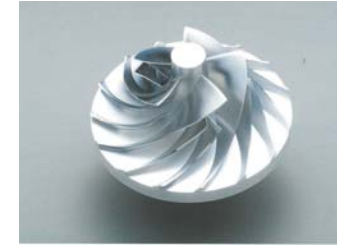
Machining Center Planet Center-Series

● Main features of E-32v/43v

1. Trunnion type table mounted directly on the base
2. Symmetrically designed against heat
3. Compact design
4. Easy operation, accessibility
5. Cost performance



Trunnion(E-32vDX)



Multi-face Precision Machining Center

● E-32vDX



Multi-face Precision Machining Center

● E-32vEX



Multi-facial 5 axis small machining center

● E-32v LC



Multi-face Precision Machining Center

● E-43v

Main specifications

	■E-32vDX	■E-32vEX	■E-32v LC	■E-43v
Working area on the table	250×250(mm)	250×250(mm)	250×250(mm)	315×315(mm)
Main spindle speed	Constant 20,000(min ⁻¹)	Max 15,000(min ⁻¹)	Max 12,000(min ⁻¹)	Max 10,000(min ⁻¹)
Spindle nose	7/24 BT-30	7/24 BT-30	7/24 BT-30	7/24 BT-40
Slide travel	X-axis:300 Y-axis:200 Z-axis:220 (mm) A-axis:0 ~ -95° C-axis:±360°(mm)	X-axis:300 Y-axis:200 Z-axis:220 (mm) A-axis:0 ~ -95° C-axis:±360°(mm)	X-axis:300 Y-axis:200 Z-axis:220 (mm) A-axis:0 ~ -95° C-axis:±360°(mm)	X-axis:370 Y-axis:320 Z-axis:320 (mm) A-axis:+10 ~ -100° C-axis:±360°(mm)
Slide rapid traverse	X-axis:20 Y-axis:20 Z-axis:20 (m/min) A-axis:8,000 C-axis:8,000(deg/min)	X-axis:20 Y-axis:20 Z-axis:20 (m/min) A-axis:8,000 C-axis:8,000(deg/min)	X-axis:20 Y-axis:20 Z-axis:20 (m/min) A-axis:8,000 C-axis:8,000(deg/min)	X-axis:24 Y-axis:24 Z-axis:20 (m/min) A-axis:7,500 C-axis:10,000(deg/min)
Number of tools(ATC)	Max. 24 tools(※40/60 tools as option)	Max. 24 tools(※40/60 tools as option)	Max. 24 tools(※40 tools as option)	Max. 24 tools(※36 tools as option)
Floor space(L×W)	1,715×2,400 (mm)	1,600×2,300 (mm)	1,700×2,200 (mm)	2,100×2,550 (mm)
Machine weight	2,800 (kg)	2,800 (kg)	2,800 (kg)	6,800 (kg)

Special purpose machine per market (Both ends simultaneous turning)

- Machines for simultaneously turning the both ends of the parts for office equipments or automobiles. They are basically fully automatic cells.



Both ends simultaneous turning lathe
● **BSS-Series**



Both ends simultaneous turning lathe
● **BSM-Series**



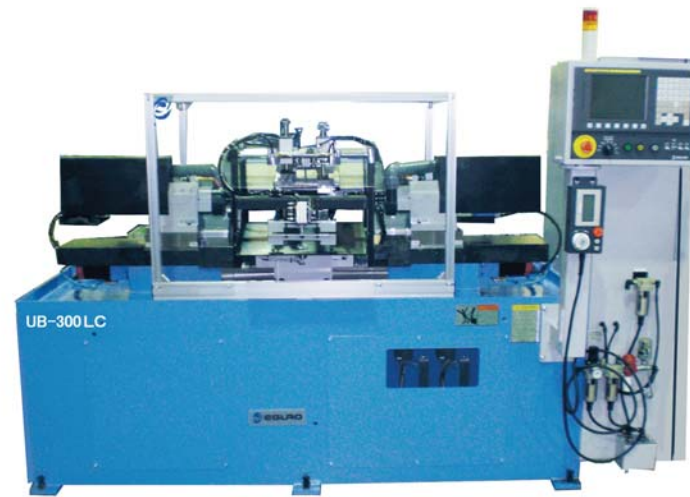
Both ends simultaneous turning lathe
● **BSZ-Series**



3 axes control both ends simultaneous turning lathe
● **BSF-A3**



Both ends simultaneous tuning lathe well prepared for coolant oil
● **BSK-300**



Both ends centering machine
● **UB-300LC**



Both ends centering machine
● **UB-700**



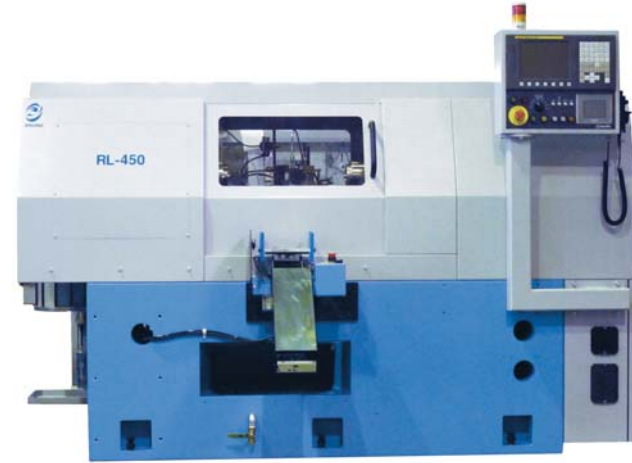
Short bar both ends simultaneous turning lathe
● **SBS-100F**

Main specifications

	■ BSS-Series	■ BSM-Series	■ BSZ-Series	■ BSF-A3	■ BSK-300	■ UB-300LC	■ UB-700	■ SBS-100F
Capacity	φ30×330(mm) ※Max. diameter/ Max length	φ50×400(mm) ※Max. diameter/ Max length	φ100×500(mm) ※Max. diameter/ Max length	φ30×400(mm) ※Max. diameter/ Max length	φ30×330(mm) ※Max. diameter/ Max length	φ30×400(mm) ※Max. diameter/ Max length	φ60×370(mm) ※Max. diameter/ Max length	φ6×100(mm) ※Min. diameter/ Min length
Main spindle speed	Max 4,000(min ⁻¹)	Max 4,000(min ⁻¹)	Max 3,000(min ⁻¹)	Max 8,000(min ⁻¹)	Max 4,000(min ⁻¹)	Max 4,000(min ⁻¹)	Max 6,000(min ⁻¹)	Max 5,000(min ⁻¹)
Type of slide	Gang turret, tools fixed	Gang turret, tools fixed	Gang turret, tools fixed	Gang turret, tools horizontally and vertically movable	Rotary tool held on right and left slide	Rotary tool held on right and left slide	Tools held	Gang turret, tools horizontally and vertically movable
Slide traverse	X-axis:150 Z-axis:150 (mm)	X-axis:150 Z-axis:150 (mm)	X-axis:260 Z-axis:200 (mm)	X-axis:160 Y-axis:280 Z-axis:150 (mm)	X-axis:150 Z-axis:150 (mm)	Z-axis:170 (mm)	Z-axis:170 (mm)	X-axis:80 Y-axis:150 Z-axis:150 (mm)
Slide rapid traverse	12(m/min)	15(m/min)	20(m/min)	15(m/min)	12(m/min)	12(m/min)	12(m/min)	X-axis:8 Y-axis:10 Z-axis:15 (m/min)
Number of slides	2 Slide	2 Slide	2 Slide	2 Slide(3-axis specification)	2 Slide	2 Slide	2 Slide	2 Slide
Floor space(L×W)	1,830×950 (mm)	2,135×1,285 (mm)	2,430×1,150 (mm)	1,730×1,240 (mm)	1,830×950 (mm)	1,800×600 (mm)	1,800×600 (mm)	1,730×1,100 (mm)
Machine weight	1,200 (kg)	1,200 (kg)	2,000 (kg)	2,500 (kg)	1,200 (kg)			1,250 (kg)

Special purpose machine per market (Turning the outer diameter of rolls)

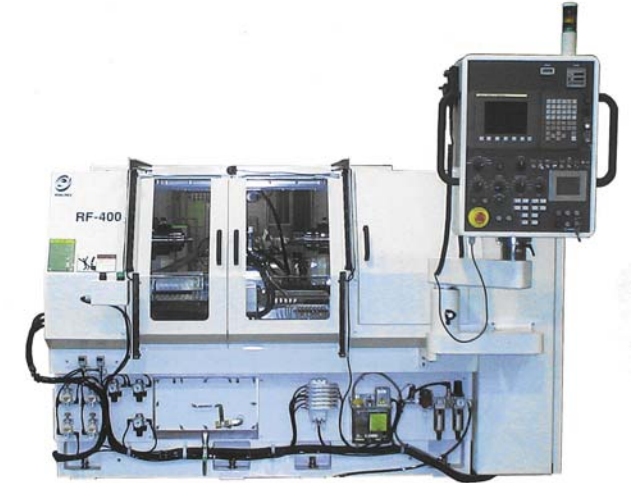
- Eguro has a line up of machines specially for turning the outer diameter of the OPC drums or magnet sleeves for office equipments, from small to large sizes. Eguro has exerted ourselves in developing these machines and accumulating the comprehensive machining technique including O.D. finishing tools, expanding chucks, turning programs, chip treatment, etc. Eguro has been pursuing high accuracy, high function and high productivity.



OPC drum finishing lathe
● **RL-450**



OPC drum finishing lathe
● **RL-550EX**



OPC drum finishing lathe
● **RF-400**



Magnet sleeves outer diameter turning lathe
● **RS-100**



Large size drum turning lathe
● **SR-600**



OPC drum finishing lathe
● **SD-550**



Magnet roller outer diameter turning lathe
● **HR-550LC**

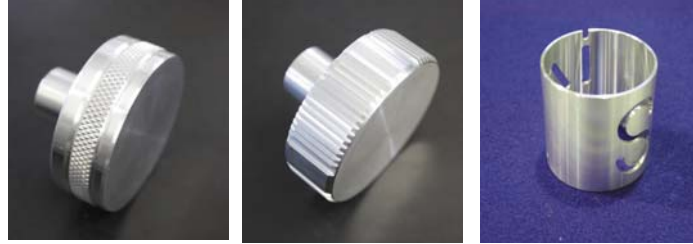
Main specifications

	■ RL-450	■ RL-550EX	■ RF-400	■ RS-100	■ SR-600	■ SD-550	■ HR-550LC
Capacity	φ100×450(mm) ※Max. diameter/ Max length	φ120×550(mm) ※Max. diameter/ Max length	φ60×400(mm) ※Max. diameter/ Max length	φ100×400 (mm)	φ300×600(mm) ※Max. diameter/ Max length	φ100×550(mm) ※Max. diameter/ Max length	φ60×400(mm) ※Max. diameter/ Max length
Main spindle speed	Max 6,000(min ⁻¹)	Max 6,000(min ⁻¹)	Max 6,000(min ⁻¹)	Max 5,000(min ⁻¹)	Max 5,000(min ⁻¹)	Max 6,000(min ⁻¹)	Max 10,000(min ⁻¹)
Spindle nose	φ65 Flat type	φ65 Flat type	φ65 Flat type	MT NO.3	φ100 Flat type	MT NO.6 Flat type	φ65 Flat type
Slide traverse	X-axis:130 Z-axis:550(mm)	X-axis:90 Z-axis:700(mm)	X1/X2-axis:100 Z1/Z2-axis:450(mm)	X-axis:65 Z-axis:470(mm)	X-axis:120 Z-axis:600(mm)	X-axis:150 Z-axis:600(mm)	X1/X2-axis:100 Z1/Z2-axis:450(mm)
Travel of the tailstock	100(mm)	400(mm)	250(mm)	70 (mm)	350(mm)	50(mm)	250(mm)
Slide rapid traverse	X-axis:5 Z-axis:10(m/min)	X-axis:5 Z-axis:15(m/min)	X1/X2-axis:10 Z1/Z2-axis:15(m/min)	X-axis:12 Z-axis:12(m/min)	X-axis:15 Z-axis:20(m/min)	X-axis:15 Z-axis:20(m/min)	X1/X2-axis:10 Z1/Z2-axis:15(m/min)
Floor space(L×W)	2,290×1,731 (mm)	2,400×1,100(mm)	2,280×1,450 (mm)	1,900×1,020(mm)	2,750×1,195 (mm)	2,350×1,500 (mm)	2,280×1,450 (mm)
Machine weight	3,100 (kg)	3,200 (kg)	3,000 (kg)	1,650 (kg)	3,500 (kg)	3,000 (kg)	2,500 (kg)

Special purpose machine per market

● The originality of Eguro, always pursuing the best suited machining way, has realized this special purpose machine.

- Roulette milling
- Lens-barrel cam milling
- Ultra high precision turning
- Ceramic raw materials turning



Ultra precision gang turret CNC lathe
● **100-nano**



3 axes control cam milling machine
● **SANACAM**



NC roulette lathe
● **RGS-200**



Ceramic raw material turning CNC lathe
● **ECOLA**



Outer cam milling machine
● **EMS-4C**



Inner cam milling machine
● **EMS-8IC**

Main specifications

	■RGS-200	■ECOLA	■100-nano	■SANACAM	■EMS-4C	■EMS-8 IC
Capacity	φ100×150(mm)	Swing over bed:460/Swing over cross slide:200(mm)	Swing over bed:250/Swing over cross slide:200(mm)	Max φ100×L150(mm) ※Inner cam only L70	— (mm) ※Specialized for cam	— (mm) ※Specialized for cam
Main spindle speed	Max 3,000(min ⁻¹)	Max 8,000(min ⁻¹)	Max 5,000(min ⁻¹)	Outer cam:Max12,000 / Inner cam:Max9,000(min ⁻¹)	Max 9,000(min ⁻¹)	Max 9,000(min ⁻¹)
Type of slide	Gang turret	Gang turret	Gang turret	Gang turret (Horizontally and Vertically)	Fixed milling spindles	Fixed milling spindles
Slide travel	X-axis:300 Z-axis:150(mm)	X-axis:260 Z-axis:150(mm)	X-axis:200 Z-axis:125(mm)	X-axis:90 Y-axis:170 Z-axis:300(mm)	X-axis:100 Y-axis:450 Z-axis:180(mm)	X-axis:100 Y-axis:450 Z-axis:180(mm)
Spindle nose	φ100 Flat type	φ100 Flat type	φ190 Flat type	φ85 Flat type	—	—
Number of tools	According to the works	According to the works	According to the works	Inner cam:2 / Outer cam:1	4	8
Floor space(L×W)	1,350×1,060 (mm)	1,640×1,550 (mm)	1,175×990 (mm)	1,450×1,245 (mm)	2,500×2,250 (mm)	2,500×2,250 (mm)
Machine weight	1,200 (kg)	900 (kg)	900 (kg)	1,630 (kg)	7,500 (kg)	7,500 (kg)

Special purpose machine per market

- What needed for machining workpieces are various such as accuracy, cycle time, etc.
The machine born by the pursuit of the best suited.

- HDD aluminum disk both ends turning lathe
- Forged parts finish turning lathe
- Flanged workpiece complex machining lathe
- Pipe both ends turning lathe



Short cycle time machine
● **PEGASUS**



HDD aluminum disk turning lathe
● **EAL-2000**



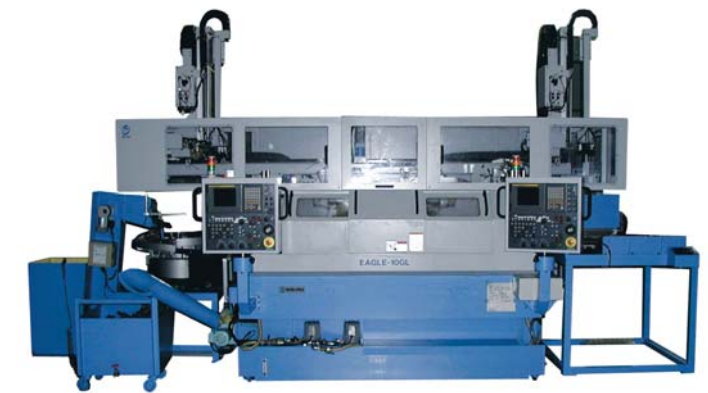
Back oriented 2 spindle NC lathe
● **B-ART-100**



Y axis slide control CNC lathe
● **CUBE**



Multi spindle center
● **OM-430**



Two sides consistent turning lathe
● **EAGLE-10**

Main specifications

■ B-ART-100

Capacity	Max $\phi 20$ (mm)
Main spindle speed	Max 6,000(min^{-1})
Type of slide	Gang turret
Slide travel	X-axis:200 Z-axis:150(mm)
Spindle nose	Rego fix ER32
Number of tools	According to the works
Floor space(L×W)	1,500×800 (mm)
Machine weight	900 (kg)

■ CUBE

Capacity	Max $\phi 100 \times 80$ (mm)
Main spindle speed	Max 8,000(min^{-1})
Type of slide	Gang turret (Horizontally and Vertically)
Slide travel	X-axis:300 Y-axis:170 Z-axis:150(mm)
Spindle nose	$\phi 100$ Flat type
Number of tools	According to the works
Floor space(L×W)	1,150×1,400 (mm)
Machine weight	1,660 (kg)

■ OM-430

Capacity	100×100×100 (mm)
Main spindle speed	Vertical axis/Horizontal axis:Max 7,000(min^{-1})
Spindle nose	Vertical axis/Horizontal axis:Rego fix ER32
Column traverse	X-axis:390 Y-axis:150 Z-axis:150 (mm) *Column unit/C-axis
Column rapid traverse	X-axis:12 Y-axis:10 Z-axis:12 (m/min)
Number of tools	Max. 7 tools(vertical axis:3 tool / Horizontal axis:4 tool)
Floor space(L×W)	1,240×1,595 (mm)
Machine weight	2,000 (kg)

Conventional small lathe reflecting the traditional technique

Eguro continues to build bench lathes and conventional lathe. They are accurate and easy in use, which are brought by the Eguro's precision technique in many years. GL-120 was awarded the prize "Long life best seller machine" at "The 8th praise of historically valuable machine tools"



EDA-6 Bench Lathes
● **LB-6**



Small precision high speed lathe
● **GL-120**



EDA-8/10 Bench Lathes
● **EB-8/10**

● **NUC-Series renews**
Eguro renews the NUC series, which were used carefully and friendly by the customers in long time. When the renewed machine is ready, it will be announced in our HP. Please contact our sales division if you need it.



Recycle machine
● **RENUCPAL-10**

※Kindly note the said announcement is not regular.

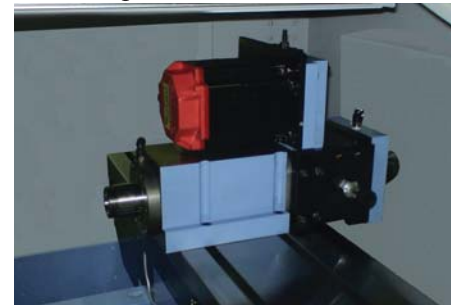
Vairous unit groups

PTC Chip Cutting Device



● **PTC-25**

For both sides machining, being mounted on the slide



● **Sub-spindle**

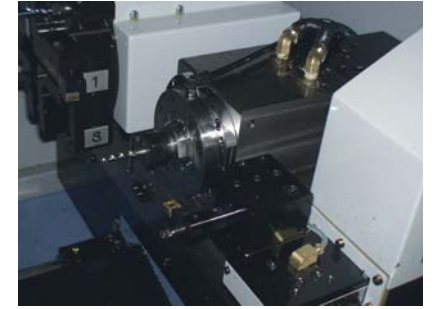


● **PTC-25F** Cut to the axial direction

Circulating tool achieves the highest sphericity



● **Radius turning unit**



● **Drill spindle**

Inner diameter polishing + Outer diameter polishing



● **Grinding unit**

8-Direction turret



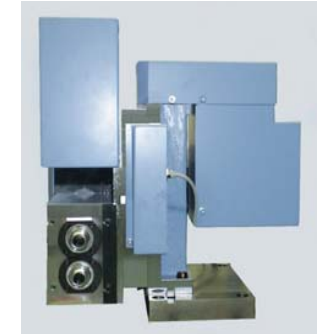
● **PTT-8**

Selection according to rotation speed



● **Drill unit**

Rigid tap machinable



● **Tap unit**

Tool set-up change per plate



● **ABC Tooling**

Barfeeder



● **MS-Series**

Automation system available for retro fitting



● **ROBO-STATION**

Main specifications

	■LB-6	■EB-8/10	■GL-120
Swing over bed	200(mm)	266(mm)	240(mm)
Main spindle speed	Max 3, 600 (min ⁻¹) ※3 step change	Max 4, 000 (min ⁻¹)	Max 2, 600 (min ⁻¹) ※10 step change
Spindle nose	EDA-6 Collet type	EDA-8/10 Collet type	EDA-8 Collet type
Slide travel	Length travel:(Front / Back) 75 Cross travel:87(mm)	Length travel:Front 80 / Back 72 Cross travel:110(mm)	Swing over the carriage:140(mm)
Travel of the tailstock	100(mm) Axis end:M.T. No.1	136 (mm) Axis end:M.T. No.2	Distance between the centers:390(mm) Axis end:M.T No.2
Machine height	970(mm)	1, 100(mm)	1, 150(mm)
Floor space(L×W)	850×500 (mm)	1, 100×600 (mm)	1, 310×670 (mm)
Machine weight	135 (kg)	260 (kg)	850 (kg)